

CLAW NECKLACE



Claws from the bear, wolf, and the eagle have long been used for necklaces. Sometimes this indicated the clan of a person wearing them. Often a gift of these claws meant that they should be worn. Today realistic claws are available for making pendant necklaces.

Shopping List: The following uses our Acrylic hairpipe and glass tile beads to decorate a claw pendant necklace.

- 1 Realistic Claw - drilled.
- 1 yard of soft leather thong.
- 30 Hollow Metal Beads, 1/4 inch diameter
- 50 tile beads
- 14 Acrylic Hairpipe 3/4 inch.

Patterns can be varied by the stringing pattern you use. The necklace shown in Figure 1 with these instructions gives one pattern. It's a good idea to lay out your pattern on something like a towel, which will keep them from rolling all over.

Cut both ends of the thong to a sharp point with a scissors. String the claw first, then each bead and hairpipe in order of your pattern.

When completed, tie a knot as in Figure 2 leaving enough length so it will go over your head. Trim off any excess thong.

If the claw you have is not drilled, use an electric drill with a bit size of 7/64". If you don't have a drill press, place the claw on a scrap board and hold down with a pliers pressed to the sides of the claw. Start the drill slowly then increase the speed as you drill through the claw material.

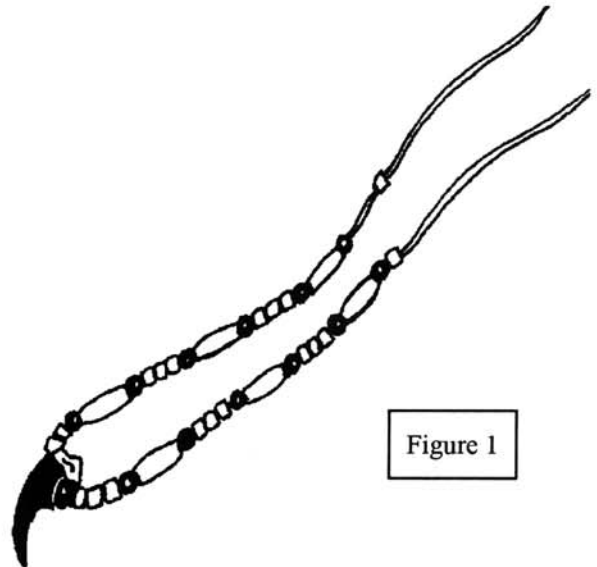


Figure 1



Figure 2